

Appendix 1 - Revocation of Salford Air Quality Management Area

Figure 1: Salford AQMA with the monitoring locations

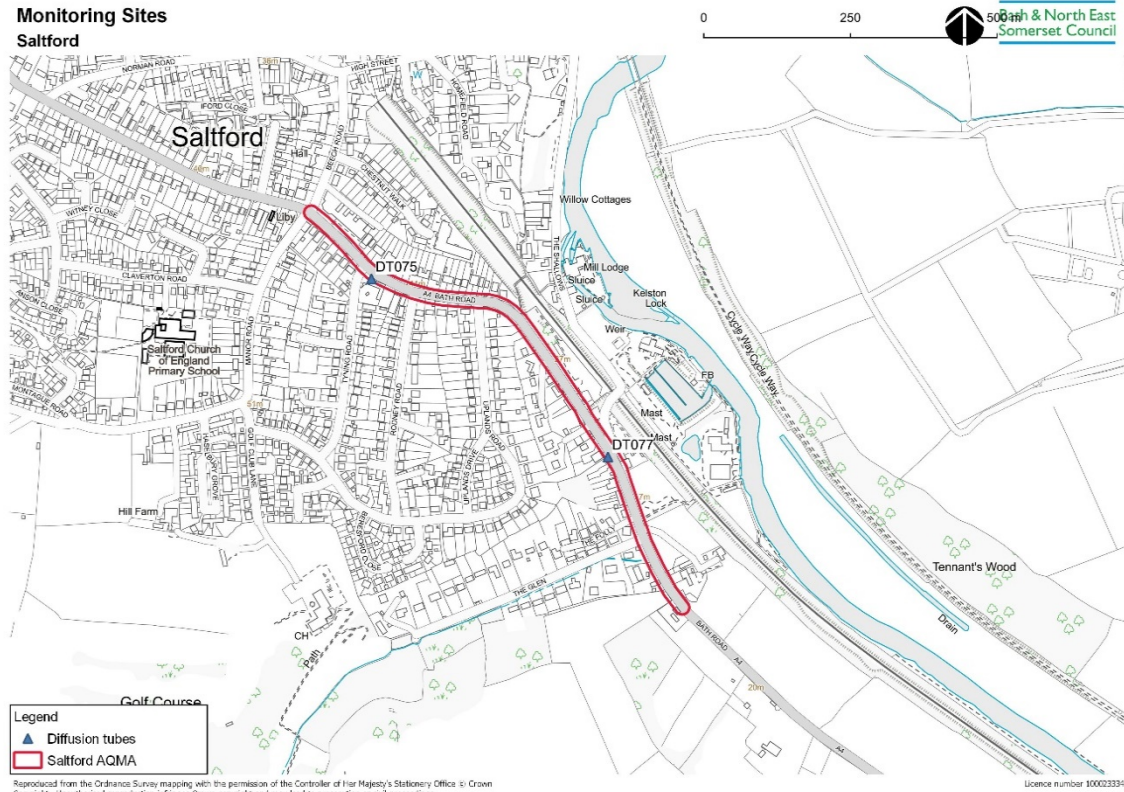


Figure 2: Long-term Trends in Annual Mean NO₂ Concentrations Measured at Diffusion Tube Monitoring Sites – Salford

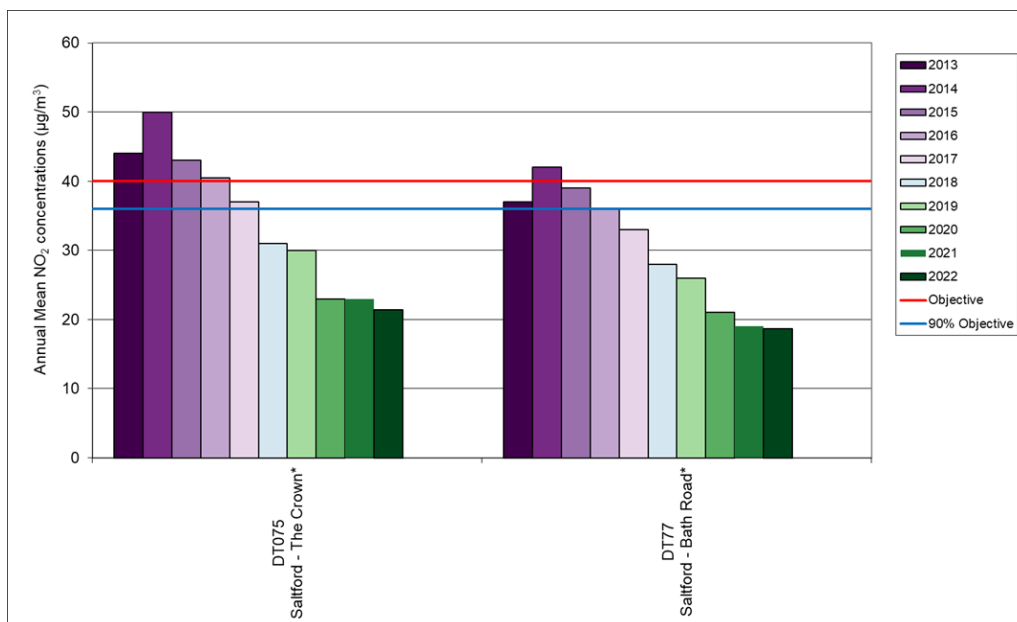


Table 1 – Annual Mean Nitrogen Dioxide Monitoring Results ($\mu\text{g}/\text{m}^3$)

Diffusion Tube ID	Site Name	2018	2019	2020	2021	2022
DT075	Salford - The Crown	31.0	30.0	23.3	23.0	21.4
DT077	Salford - Bath Road	28.0	26.0	21.0	19.3	18.7

(Further information on monitoring locations and results are available in the 2022 ASR)